

# Just Camp Low Profile Opel/Citroën



Some decisions are easy. For example, the new Just Camp! With its chic new design, good equipment and many fresh ideas, it makes it easy to get started in caravanning. Seven different layout solutions also contribute to this, covering the most diverse wishes and requirements for the type of mobile life. The new Just Camp is available on the basis of the Citroën Jumper or Opel Movano.

## Technical info

Overall length, approx.	696 - 741 cm
Overall width, approx.	233 cm
Overall height, approx.	294 cm
Headroom in living area, approx.	213 cm

Maximum values partly not possible for all models or only in connection with certain options.

## Upholstery



+ Upholstery Drake

## Wood décor



+ Wood décor Noce Nagano

## Plus factors

- + Proven Lifetime body construction with GRP outer skin and excellent insulation
- + 70 cm wide habitation door with central locking
- + Interior height 2.13 m (not below pull-down bed)
- + Pleasant sleeping comfort due to 150 mm thick 7-zone cold foam mattresses made of climate-regulating material and ergonomic wooden slatted frames



# Just Camp Low Profile Opel/Citroën

## Technical info



Just Camp Low Profile Opel/Citroën		T 6752 DBL	T 6762	T 6812 EB
Standard chassis		Citroen Jumper Light Low Platform	Citroen Jumper Light Low Platform	Citroen Jumper Light Low Platform
Emission standards		Euro 6d Final	Euro 6d Final	Euro 6d Final
Overall length, approx.	cm	696	696	696
Overall width, approx.	cm	233	233	233
Overall height, approx.	cm	294 <sup>1)</sup>	294 <sup>1)</sup>	294 <sup>1)</sup>
Headroom in living area, approx.	cm	213	213	213
Towable load braked/unbraked	kg	2000 / 750	2000 / 750	2000 / 750
Wheelbase, approx.	mm	4035	4035	3800
Bed dimension: Front bed, L x W, approx.	cm	200 x 140 ○	200 x 150	200 x 140 - 120 ○
Bed dimension: Central / middle bed, L X W, approx.	cm	200 x 110 - 90 ○	210 x 120 ○	210 x 105 - 70 ○
Bed dimension: Rear bed, L x W, approx.	cm	190 x 150		198 x 80 / 200 x 80 / 210 x 170 ○
Sleeping berths standard / max.		2 / 5 ○	2 / 4 ○	2 / 5 ○
Standard engine		BlueHDi 140	BlueHDi 140	BlueHDi 140
kW (bhp)		102 (140)	102 (140)	102 (140)
Mass in running order (+/-5%)*	kg	2840 (2698 to 2982)*	2860 (2717 to 3003)*	2790 (2651 to 2930)*
Manufacturer-specified mass for optional equipment*	kg	324	304	374
Technically permissible maximum laden mass*	kg	3499	3499	3499
Permitted number of seats (including driver)*		4	4	4 - 5 ○
Refrigerator volume (thereof freezer), approx.	l	137 (15) / 137 (15) ○	137 (15)	137 (15)
Waste water tank, approx.	l	90	90	90
Fresh water tank capacity, total/ Fresh water tank capacity at driving filling	l	116 / 20	116 / 20	116 / 20
Measurement storage opening left (W x H)	cm	75 x 65 ○	55 x 170	75 x 95 ○
Measurement storage opening right (W x H)	cm	75 x 85	60 x 115	75 x 115



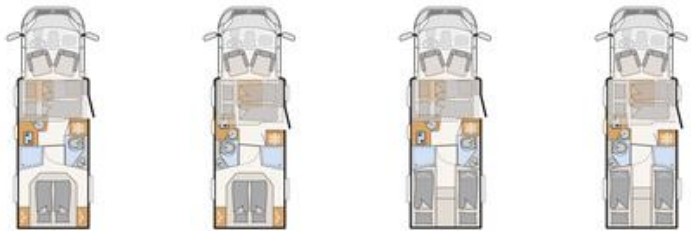
\* INFO

The specified mass in running order is a default value defined in the type-approval procedure. Due to manufacturing tolerances, the actual weighed mass in running order may deviate from the value stated above. Deviations of up to ± 5 % of the mass in running order are legally permissible and possible. The permissible range in kilograms is given in brackets after the mass in running order. The manufacturer-specified mass for optional equipment is a calculated value for each type and layout that Dethleffs uses to determine the maximum weight available for factory-fitted optional equipment. The limitation of optional equipment is intended to ensure that the minimum pay-mass, i.e. the legally prescribed free mass for baggage and retrofitted accessories, is actually available for the vehicle load capacity of the vehicles delivered by Dethleffs. The real weight of your vehicle ex works can only be determined when it is

weighed at the end of the line. If, in exceptional cases, the weighing shows that the actual load capacity falls below the minimum pay-mass despite limiting the optional equipment due to a permissible weight deviation, we will check together with your trade partner and you whether we should, for example, increase the load capacity of the vehicle, reduce the number of seats or remove optional equipment before delivering the vehicle. The technically permissible maximum laden mass of the vehicle and the technically permissible maximum mass on the axle must not be exceeded. Detailed information & explanations on the subject of weight and the configuration of the vehicle can be found in the section Legal information. For a more detailed description of all mandatory technical dependencies, please refer to the explanations on the footnotes.

# Just Camp Low Profile Opel/ Citroën

## Technical info



Just Camp Low Profile Opel/Citroën		T 7052 DBM	T 7052 DBL	T 7052 EB	T 7052 EBL
Standard chassis		Citroen Jumper Light Low Platform	Citroen Jumper Light Low Platform	Citroen Jumper Light Low Platform	Citroen Jumper Light Low Platform
Emission standards		Euro 6d Final	Euro 6d Final	Euro 6d Final	Euro 6d Final
Overall length, approx.	cm	741	741	741	741
Overall width, approx.	cm	233	233	233	233
Overall height, approx.	cm	294 <sup>1)</sup>	294 <sup>1)</sup>	294 <sup>1)</sup>	294 <sup>1)</sup>
Headroom in living area, approx.	cm	213	213	213	213
Towable load braked/unbraked	kg	2000 / 750	2000 / 750	2000 / 750	2000 / 750
Wheelbase, approx.	mm	4035	4035	4035	4035
Bed dimension: Front bed, L x W, approx.	cm	200 x 140 - 120 ○	200 x 140 ○	200 x 140 - 120 ○	200 x 140 ○
Bed dimension: Central / middle bed, L X W, approx.	cm	210 x 120 - 80 ○	206 x 110 - 90 ○	210 x 120 - 80 ○	206 x 110 - 90 ○
Bed dimension: Rear bed, L x W, approx.	cm	190 x 150	190 x 150	2x 215 x 80 / 210 x 190 ○	2x 215 - 195 x 80 / 210 x 190 ○
Sleeping berths standard / max.		2 / 5 ○	2 / 5 ○	2 / 5 ○	2 / 5 ○
Standard engine		BlueHDi 140	BlueHDi 140	BlueHDi 140	BlueHDi 140
kW (bhp)		102 (140)	102 (140)	102 (140)	102 (140)
Mass in running order (+/-5%)*	kg	2840 (2698 to 2982)*	2900 (2755 to 3045)*	2840 (2698 to 2982)*	2900 (2755 to 3045)*
Manufacturer-specified mass for optional equipment*	kg	320	260	320	260
Technically permissible maximum laden mass*	kg	3499	3499	3499	3499
Permitted number of seats (including driver)*		4 - 5 ○	4	4 - 5 ○	4
Refrigerator volume (thereof freezer), approx.	l	137 (15) / 137 (15) ○	137 (15) / 137 (15) ○	137 (15) / 137 (15) ○	137 (15) / 137 (15) ○
Waste water tank, approx.	l	90	90	90	90
Fresh water tank capacity, total/ Fresh water tank capacity at driving filling	l	116 / 20	116 / 20	116 / 20	116 / 20
Measurement storage opening left (W x H)	cm	95 x 95 ○	95 x 95 ○	95 x 95 ○	95 x 95 ○
Measurement storage opening right (W x H)	cm	95 x 115	95 x 115	95 x 115	95 x 115

○ Optional equipment — Not possible ● Standard equipment ◆ Mandatory ▲ Zum Zeitpunkt der Veröffentlichung nicht bekannt



\* INFO

The specified mass in running order is a default value defined in the type-approval procedure. Due to manufacturing tolerances, the actual weighed mass in running order may deviate from the value stated above. Deviations of up to ± 5 % of the mass in running order are legally permissible and possible. The permissible range in kilograms is given in brackets after the mass in running order. The manufacturer-specified mass for optional equipment is a calculated value for each type and layout that Dethleffs uses to determine the maximum weight available for factory-fitted optional equipment. The limitation of optional equipment is intended to ensure that the minimum pay-mass, i.e. the legally prescribed free mass for baggage and retrofitted accessories, is actually available for the vehicle load capacity of the vehicles delivered by Dethleffs. The real weight of your vehicle ex works can only be determined when it is

weighed at the end of the line. If, in exceptional cases, the weighing shows that the actual load capacity falls below the minimum pay-mass despite limiting the optional equipment due to a permissible weight deviation, we will check together with your trade partner and you whether we should, for example, increase the load capacity of the vehicle, reduce the number of seats or remove optional equipment before delivering the vehicle. The technically permissible maximum laden mass of the vehicle and the technically permissible maximum mass on the axle must not be exceeded. Detailed information & explanations on the subject of weight and the configuration of the vehicle can be found in the section Legal information. For a more detailed description of all mandatory technical dependencies, please refer to the explanations on the footnotes.

# Standard equipment

	T 675Z DBL	T 676Z	T 681Z EB	T 705Z DBM	T 705Z DBL	T 705Z EB	T 705Z EBL
<b>Chassis Citroen / Opel</b>							
Citroen Jumper Light / Opel Movano Light (3,499 kg) BlueHDi 2.2 l / 103 kW / 140 hp, 6-speed manual gearbox	●	●	●	●	●	●	●
Steel wheels 15" (215/70 R15C) incl. full wheel covers	●	●	●	●	●	●	●
<b>Chassis equipment Citroen / Opel</b>							
ABS (anti-lock braking system) / EBD (electronic brake force distribution)	●	●	●	●	●	●	●
Anti-theft device	●	●	●	●	●	●	●
Bumper and door handles painted in white	●	●	●	●	●	●	●
Captain seat, double armrests, swivel function with height and tilt adjustment for driver and front passenger seat	●	●	●	●	●	●	●
Chrome-plated radiator grille	●	●	●	●	●	●	●
Cruise control	●	●	●	●	●	●	●
Cup holder in the centre of the dashboard	●	●	●	●	●	●	●
DAB+ radio antenna integrated into right exterior mirror	●	●	●	●	●	●	●
Dashboard with chrome rings	●	●	●	●	●	●	●
Daytime running lights integrated into headlights	●	●	●	●	●	●	●
Diesel tank 90 litre incl. 19L AdBlue tank	●	●	●	●	●	●	●
Driver and passenger airbags	●	●	●	●	●	●	●
Driver's cab manual A/C	●	●	●	●	●	●	●
ESP incl. ASR, Traction Plus, Hill Holder and Hill Descent Control	●	●	●	●	●	●	●
Electrically adjustable and heated exterior mirrors incl. blind spot mirror and integrated turn indicator	●	●	●	●	●	●	●
Exterior colour chassis polar white	●	●	●	●	●	●	●
Fix&Go kit (tyre repair kit)	●	●	●	●	●	●	●
Front-wheel drive	●	●	●	●	●	●	●
Preparation for radio system incl. loudspeakers in the driver's cabin	●	●	●	●	●	●	●
Rear axle mudflaps	●	●	●	●	●	●	●
Tyre Pressure Monitoring System (TPMS)	●	●	●	●	●	●	●
Widened rear axle	●	●	●	●	●	●	●
<b>Exterior features</b>							
70 cm wide habitation door	●	●	●	●	●	●	●
Dethleffs Exclusive rear light carrier with 3rd brake light	●	●	●	●	●	●	●
EPS insulation	●	●	●	●	●	●	●
Floor thickness: 49 mm, side wall thickness: 34mm and roof thickness: 35 mm	●	●	●	●	●	●	●
Flyscreen habitation door	●	●	●	●	●	●	●
GRP roof	●	●	●	●	●	●	●
Large rear garage: right-hand garage door with turn/tighten lock, rear lowering (150 kg surface load), anti-slip surface, heated, lashing strips, illuminated, 1x 230 V socket	●	—	●	●	●	●	●
Large rear garage: two garage doors/flaps with turn/tighten lock, rear lowering (150 kg surface load), anti-slip surface, heated, lashing strips, illuminated, 1x 230 V socket	—	●	—	—	—	—	—
Lifetime construction technology: Tried-and-tested reliable flooring and superstructure with excellent insulation	●	●	●	●	●	●	●
Side panels and rear panel made of resistant high-gloss GRP with smooth, shiny surface	●	●	●	●	●	●	●
Skylight 40 x 40 cm above the seating lounge	●	●	●	●	●	●	●
<b>Exterior design</b>							
Exterior body painted in white	●	●	●	●	●	●	●
<b>Interior design</b>							
Upholstery Drake	●	●	●	●	●	●	●
Wood décor Noce Nagano	●	●	●	●	●	●	●
<b>Textile equipment</b>							
Fixed beds with ergonomic wooden slatted frames and 150 mm thick 7-zone premium mattresses made of climate-regulating material	●	●	●	●	●	●	●
<b>Furniture layouts</b>							
Cosy lounge seating group with free-standing, rigid table base	●	●	—	—	●	—	●
Double bed low	●	—	—	—	—	—	—
Electric pull-down bed across the seating unit <sup>16)</sup>	—	●	—	—	—	—	—
Height-adjustable double bed	—	—	—	●	●	—	—

# Standard equipment

	T 6752 DBL	T 6762	T 6812 EB	T 7052 DBM	T 7052 DBL	T 7052 EB	T 7052 EBL
High-level single beds incl. comfortable access via steps	—	—	●	—	—	●	●
Overhead locker doors with soft-close function	●	●	●	●	●	●	●
Seating area with mountable and extendible table and two integrated 3-point seatbelts	—	—	●	●	—	●	—
Wardrobe floor-to-ceiling with convenient linen drawers in upper area	—	●	—	—	—	—	—
Wardrobe to the left and right of the queen-size bed	●	—	—	●	●	—	—
<b>Kitchen</b>							
Floor-to-ceiling fridge with separate freezer compartment and automatic energy selection (AES) (137 l)	●	●	●	●	●	●	●
Gourmet kitchen: two-ring hob, large drawers, cutlery tray, bin and generous worktop	●	●	●	●	●	●	●
MultiFlex rail system incl. hooks (further accessories via Dethleffs Original Accessories)	●	●	●	●	●	●	●
<b>Bathroom</b>							
Equipped with cabinets, storage compartments, large mirrors, toothbrush mug and toilet paper holder	●	●	●	●	●	●	●
Large bathroom with separate shower and toilet with locking door to the lounge	●	●	—	●	●	●	●
Swiveling bathroom wall for optimal use of space	—	—	●	—	—	—	—
<b>Heating</b>							
Gas hot-air heating 6kW with hot-water boiler	●	●	●	●	●	●	●
Heating in the seating unit for optimum heat distribution, built-in	●	●	●	●	●	●	●
<b>Electrical installation</b>							
Automatic switch-on/disconnect for starter battery, leisure battery and refrigerator	●	●	●	●	●	●	●
Awning light 12 V	●	●	●	●	●	●	●
Electric block with integrated overvoltage protection and separate ground fault circuit breaker	●	●	●	●	●	●	●
LED lighting throughout the vehicle	●	●	●	●	●	●	●
Leisure battery AGM, 95 Ah	●	●	●	●	●	●	●
Number of sockets 1x 12V, 7x 230V, 4x USB	—	●	—	—	—	—	—
Number of sockets 1x 12V, 8x 230V, 4x USB	—	—	●	●	—	●	—
Number of sockets 1x 12V, 8x 230V, 5x USB	●	—	—	—	●	—	●
On-board control panel	●	●	●	●	●	●	●
Spotlights in the roof lining above the habitation door	●	●	●	●	●	●	●
<b>Water supply</b>							
Fresh water tank in insulated and heated area	●	●	●	●	●	●	●
Submersible pump	●	●	●	●	●	●	●
<b>Gas supply</b>							
Storage space for 2 gas bottles with a filling weight of 11 kg each	●	●	●	●	●	●	●

# PACKAGES JUST CAMP LOW PROFILE OPEL/CITROËN

Package	Package One, 4 m awning (12126)	Package One, 4,5 m awning (12126)	Package X (awning 4.0 m) (11936)	Package X (awning 4.5 m) (11936)
Automatic HD satellite system 65 Twin	x	x		
Flat screen 22" HD TV (incl. DVD player, HDMI, DVB-S2 satellite receiver and terrestrial DVB-T2 receiver)	x	x		
Flat-screen TV bracket	x	x		
Rear view camera (single camera)	x	x	x	x
Omnistor cassette awning 4.0 m (manual)	x		x	
Omnistor cassette awning 4.5 m (manual)		x		x
Additional weight (kg)*	51.6	55.6	35.1	39.1

Package	Family Package T 6812, 7052 EB (13881)	Family Package T 6752 DBL (13881)	Family Package T 7052 DBL (13881)	Family Package T 6762 (13881)	Family Package T 7052 EBL (13881)	Family Package T 7052 DBM (13881)
Opening window in T-hood	x	x	x	x	x	x
Habitation door with window incl. blackout and central locking (incl. cab door)	x	x	x	x	x	x
Cab blackout blinds	x	x	x	x	x	x
Panorama skylight 70 x 50 cm in the living area	x	x	x	x	x	x
Light Moments: Indirect ambient lighting above the overhead lockers	x	x	x	x	x	x
Light Moments: Indirect wall surface ambient lighting	x	x	x	x	x	x
Option to convert single beds to double bed	x				x	
Cosy L-shaped seating group with free-standing, lowerable table base and 2 integrated 3-point belts	x					x
Access locker door left	x		x		x	x
Access locker door left		x				
Additional weight (kg)*	45.5	27.5	29.5	21.5	37.5	37.5



\* INFO

The factory installation of optional equipment increases the actual mass of the vehicle and reduces the pay-mass. The additional weight indicated for packages and optional equipment shows the additional weight compared to the standard equipment of the respective model or layout. The total weight of the selected optional equipment must not exceed the manufacturer-specified mass for

optional equipment shown in the model overviews. This is a calculated value for each type and layout that Dethleffs uses to determine the maximum weight available for factory-fitted optional equipment. Detailed information and explanations on the subject of weight can be found in the Legal information section.

Package	Winter Comfort Package hot-air heating Just Camp 6752 DBL, 6762, 6812 EB (8251)	Winter Comfort Package hot-air heating Just Camp 7052 (8251)
Insulated under-floor pipes	x	x
Waste water tank and pipes electrically heated	x	x
Insulated waste water tank	x	x
Switch for water pump	x	x
Gas hot-air heating 6kW with 1.8kW electric heating element and hot-water boiler incl. digital control panel	x	x
XPS insulation	x	
XPS insulation		x
Additional weight (kg)*	27.7	28.7

#### Chassis Package (13880)

LED daytime running lights

Leather steering wheel and gear knob with leather sleeve

Driver's cab automatic A/C

Multifunctional steering wheel

Dashboard with aluminium application

Additional weight (kg)\*

0.4

#### Assistance Package (13302)

Light Assist

High Beam Assist

Rain sensor

Emergency Brake Assist

Lane Keeping Assist

Traffic Sign Assist

Additional weight (kg)\*

0.6

#### Pre-wiring kit (11350)

Pre-wiring for solar

Pre-wiring for roof A/C

Pre-wiring for satellite system

Pre-wiring for first reversing camera

Pre-wiring for second reversing camera

Additional weight (kg)\*

7.6

△ Zum Zeitpunkt der Veröffentlichung nicht bekannt



\* INFO

The factory installation of optional equipment increases the actual mass of the vehicle and reduces the pay-mass. The additional weight indicated for packages and optional equipment shows the additional weight compared to the standard equipment of the respective model or layout. The total weight of the selected optional equipment must not exceed the manufacturer-specified mass for

optional equipment shown in the model overviews. This is a calculated value for each type and layout that Dethleffs uses to determine the maximum weight available for factory-fitted optional equipment. Detailed information and explanations on the subject of weight can be found in the Legal information section.

# Optional equipment\*\*

	Included in package	Additional weight (kg)*	Code	T 6752 DBL	T 6762	T 6812 EB	T 7052 DBM	T 7052 DBL	T 7052 EB	T 7052 EBL
<b>Chassis Citroen / Opel</b>										
Alloy wheel Citroën / Opel 16", black	—	20	13427	○	○	○	○	○	○	○
Citroën Jumper / Opel Movano Light (3,499 kg) BlueHDi 2.2 l / 121 kW / 165 hp, 6-speed manual gearbox	—	0	165M	○	○	○	○	○	○	○
<b>Weight upgrade</b>										
Weight upgrade 3,650 kg	—	0	10769	○	○	○	○	○	○	○
<b>Chassis equipment Citroen / Opel</b>										
Additional seat <sup>13)</sup>	—	14	435	—	—	○	○	—	○	—
Tow bar (check permissible gross towing weight for trailer operation)	—	66	273	—	—	—	○	○	○	○
Tow bar (check permissible gross towing weight for trailer operation)	—	61	273	○	○	—	—	—	—	—
Tow bar (check permissible gross towing weight for trailer operation)	—	64	273	—	—	○	—	—	—	—
<b>Exterior features</b>										
Access locker door left	FA-P	6	331	○	—	—	—	—	—	—
Access locker door left	FA-P	8	331	—	—	○	○	○	○	○
Bike rack for 3 bikes (lowerable)	—	21.1	7482	○	○	○	○	○	○	○
Bike rack for 3 bikes (rear)	—	9.6	938	○	○	○	○	○	○	○
Stable, double-glazed flush-fitting windows with integrated blinds and flyscreens	—	1	415	○	○	○	○	○	○	○
<b>Furniture layouts</b>										
Bed convert for seating lounge transverse	—	9	1944	—	○	—	—	—	—	—
Bed convert for seating lounge transverse	—	7	1944	—	—	○	—	—	—	—
Bed convert for seating lounge transverse	—	8.5	1944	—	—	—	○	—	○	—
Bed convert for seating lounge transverse	—	5.5	1944	○	—	—	—	○	—	○
Electric pull-down bed across the seating unit	—	72	680	—	—	○	○	—	○	—
Electric pull-down bed across the seating unit	—	77	680	○	—	—	—	○	—	○
ISOFIX child seat bracket for third and fourth seat facing direction of travel	—	4	8125	—	—	○	○	—	○	—
Option to convert single beds to double bed	FA-P	8	1883	—	—	○	—	—	○	○
<b>Kitchen</b>										
Fridge (137 l) with integrated oven	—	11	290	○	—	—	○	○	○	○
<b>Bathroom</b>										
Additional window in bathroom	—	5	372	○	●	—	○	○	○	○
Shower grid	—	2	1657	●	○	—	○	○	○	○
Shower grid	—	1.5	1657	—	—	○	—	—	—	—
<b>Multimedia</b>										
Dethleffs Moniceiver incl. DAB+, Apple CarPlay / Android Auto	—	2	11301	○	○	○	○	○	○	○
Dethleffs Naviceiver incl. DAB+, truck navigation and connection to on-board control panel	—	3.65	9582	○	○	○	○	○	○	○
Second reversing camera in rear moulding	—	1	11541	○	○	○	○	○	○	○
<b>Heating</b>										
Floor heating electric (partial)	—	5	763	○	○	○	○	○	○	○
Gas hot-air heating 6kW with 1.8kW electric heating element and hot-water boiler incl. digital control panel	WI-KO	1	330	○	○	○	○	○	○	○
<b>Air Conditioning</b>										
Roof A/C	—	40	609	○	○	○	○	○	○	○



The factory installation of optional equipment increases the actual mass of the vehicle and reduces the pay-mass. The additional weight indicated for packages and optional equipment shows the additional weight compared to the standard equipment of the respective model or layout. The total weight of the selected optional equipment must not exceed the manufacturer-specified mass for optional equipment shown in the model overviews. This is a calculated value for each type and layout that Dethleffs uses to determine the maximum weight available for factory-fitted optional equipment. Detailed information and

explanations on the subject of weight can be found in the Legal information section. An increase of load capacity increases the manufacturer-specified mass for optional equipment. The increase results from the higher pay-mass due to the alternative chassis. The increased tare weight of the alternative chassis and, in particular, the weight for any mandatory heavier engine variants (e.g. 180 hp) must be deducted from this. For a more detailed description of all mandatory technical dependencies, please refer to the explanations on the footnotes.



# Optional equipment\*\*

	Included in package	Additional weight (kg)*	Code	T 6752 DBL	T 6762	T 6812 EB	T 7052 DBM	T 7052 DBL	T 7052 EB	T 7052 EBL
<b>Electrical installation</b>										
Second leisure battery AGM, 95 Ah	—	27	830	○	○	○	○	○	○	○
Solar power system 100 watt	—	12.6	922	○	○	○	○	○	○	○
<b>Water supply</b>										
Insulated waste water tank	WI-KO	11	665	○	○	○	○	○	○	○
Switch for water pump	WI-KO	0.2	397	○	○	○	○	○	○	○
<b>Gas supply</b>										
Automatic gas cylinder switchover incl. crash sensor, EisEx and gas filter	—	2.5	1577	○	○	○	○	○	○	○
<b>Packages</b>										
Assistance Package	—	0.6	13302	○	○	○	○	○	○	○
Chassis Package	—	0.4	13880	○	○	○	○	○	○	○
Family Package T 6752 DBL	—	27.5	13881	○	—	—	—	—	—	—
Family Package T 6762	—	21.5	13881	—	○	—	—	—	—	—
Family Package T 6812, 7052 EB	—	45.5	13881	—	—	○	—	—	○	—
Family Package T 7052 DBL	—	29.5	13881	—	—	—	—	○	—	—
Family Package T 7052 DBM	—	37.5	13881	—	—	—	○	—	—	—
Family Package T 7052 EBL	—	37.5	13881	—	—	—	—	—	—	○
Package One, 4 m awning	—	51.6	12126	○	○	○	—	—	—	—
Package One, 4,5 m awning	—	55.6	12126	—	—	—	○	○	○	○
Package X (awning 4.0 m)	—	35.1	11936	○	○	○	—	—	—	—
Package X (awning 4.5 m)	—	39.1	11936	—	—	—	○	○	○	○
Pre-wiring kit	—	7.6	11350	○	○	○	○	○	○	○
Winter Comfort Package hot-air heating Just Camp 6752 DBL, 6762, 6812 EB	—	27.7	8251	○	○	○	—	—	—	—
Winter Comfort Package hot-air heating Just Camp 7052	—	28.7	8251	—	—	—	○	○	○	○
<b>Miscellaneous</b>										
Registration documents (CoC papers)	—	0	15152	◆	◆	◆	◆	◆	◆	◆

○ Optional equipment — Not possible ● Standard equipment ◆ Mandatory ▲ Zum Zeitpunkt der Veröffentlichung nicht bekannt

FA-P Family Package WI-KO Winter Comfort Package



The factory installation of optional equipment increases the actual mass of the vehicle and reduces the pay-mass. The additional weight indicated for packages and optional equipment shows the additional weight compared to the standard equipment of the respective model or layout. The total weight of the selected optional equipment must not exceed the manufacturer-specified mass for optional equipment shown in the model overviews. This is a calculated value for each type and layout that Dethleffs uses to determine the maximum weight available for factory-fitted optional equipment. Detailed information and

explanations on the subject of weight can be found in the Legal information section. An increase of load capacity increases the manufacturer-specified mass for optional equipment. The increase results from the higher pay-mass due to the alternative chassis. The increased tare weight of the alternative chassis and, in particular, the weight for any mandatory heavier engine variants (e.g. 180 hp) must be deducted from this. For a more detailed description of all mandatory technical dependencies, please refer to the explanations on the footnotes.

# LEGAL NOTES ON WEIGHT-RELATED INFORMATION

The weight specifications and tests for **motorhomes** are uniformly regulated throughout the EU in EU Implementing Regulation No. 2021/535 (until June 2022: EU Implementing Regulation No. 1230/2012). We have summarised and explained the key terms and legal requirements from this **regulation** for you below. Our **dealers** and the Dethleffs configurator on our website offer you additional assistance in configuring your vehicle.

## 1. Technically permissible maximum laden mass

The **technically permissible maximum laden mass** of the vehicle (e.g. 3,500 kg) is a mass specification set by the manufacturer which the vehicle must not exceed. Information on the **technically permissible maximum laden mass** of the model you have chosen can be found in the technical data. If the vehicle exceeds the **technically permissible maximum laden mass** in everyday driving, this constitutes an administrative offence which may result in a fine.

## 2. Mass in running order

In simple terms, the **mass in running order** is the basic vehicle with **standard equipment** plus a legally fixed standard weight of 75 kg for the driver. This essentially includes the following items:

- the unladen weight of the vehicle together with the bodywork, including operating fluids such as greases, oils and coolants;
- the **standard equipment**, i.e. all equipment items that are included as standard in the factory-fitted scope of delivery;
- the fresh water tank filled to 100 % in driving mode (driving fill according to manufacturer's specifications;) and an aluminium gas cylinder filled to 100 %;
- the **fuel tank**, which is 90 % full, including fuel;
- the driver, whose weight – regardless of the actual weight – is generally specified as 75 kg in accordance with EU law.

Information on the **mass in running order** can be found for each model in our sales documents. It is important to note that the value for **mass in running order** given in the sales documents is a default value determined in the **type-approval procedure** and verified by the authorities. It is legally permissible and possible for the **mass in running order** of the vehicle delivered to you to deviate from the nominal value stated in the sales documents. The legally permissible **tolerance** is  $\pm 5\%$ . In this way, the EU legislator accounts for the fact that certain fluctuations in the **mass in running order** occur due to variations in the weight of supplied parts as well as due to processes and weather conditions.

These weight deviations can be illustrated by means of an example calculation:

- **Mass in running order** acc. to sales documents: 2,850 kg
- Legally permissible **tolerance** of  $\pm 5\%$ : 142.50 kg
- Legally permissible range of **mass in running order**: 2,707.50 kg to 2,992.50 kg

The specific range of permissible weight deviations can be found for each model in the technical data. Dethleffs makes great efforts to reduce weight variations to the minimum that is unavoidable for production reasons. **Deviations** at the upper and lower end of the range are therefore very rare; however, they cannot be completely ruled out technically, even

with all optimisations. The real weight of the vehicle and compliance with the permissible **tolerance** is therefore checked by Dethleffs by weighing each vehicle at the **end of the line**.

## 3. Mass of the passengers

The **mass of the passengers** is set a standard value of 75 kg for each seat provided by the manufacturer, regardless of the actual weight of the passengers. The **mass of the driver** is already included in the **mass in running order** (see no. 2 above) and is therefore not included again. In the case of a **motorhome** with four **permitted seats**, the **mass of the passengers** is therefore  $3 * 75 \text{ kg} = 225 \text{ kg}$ .

## 4. Optional equipment and actual mass of the vehicle

**Optional equipment** (also: additional equipment) includes, according to the legal definition, all optional equipment parts not included in the **standard equipment** which are fitted to the vehicle under the responsibility of the manufacturer – i.e. ex works – and can be ordered by the customer (e.g. awning, bicycle or motorbike carrier, satellite system, solar system, oven, etc.). Information on the individual or package weights of the **optional equipment** that can be ordered can be found in our sales documents. **Optional equipment** in this sense does not include other **accessories** that are retrofitted by the **dealer** or you personally after the vehicle has been delivered ex works.

The **mass of the vehicle in running order** (see no. 2 above) and the mass of the **optional equipment** fitted to a specific vehicle at the factory are together referred to as the **actual mass**. You will find the corresponding information for your vehicle after handover under item 13.2 of the Certificate of Conformity (CoC). Please note that this specification also represents a standardised value. Since the **mass in running order** – as an element of the **actual mass** – is subject to a legally permissible **tolerance** of  $\pm 5\%$  (see no. 2), the **actual mass** may also deviate accordingly from the stated nominal value.

## 5. Pay-mass and minimum pay-mass

The installation of optional equipment is also subject to technical and legal limits: Only so much optional equipment can be ordered and fitted at the factory that sufficient free weight remains for baggage and other accessories ("pay-mass") without exceeding the technically permissible maximum laden mass. The pay-mass is calculated by subtracting the mass in running order (nominal value according to sales documents, see no. 2 above), mass of the optional equipment and the mass of the passengers (see no. 3 above) from the technically permissible maximum laden mass (see no. 1 above). The EU regulations stipulate a fixed minimum pay-mass for motorhomes, which must remain as a minimum for baggage or other non-factory-fitted accessories. This minimum pay-mass is calculated as follows:

Minimum pay-mass in kg  $\geq 10 * (n + L)$

Where: "n" is the maximum number of passengers plus the driver and "L" is the overall length of the vehicle in metres.

For a motorhome with a length of 6 m and 4 approved seats, the minimum pay-mass is therefore e.g.  $10 \text{ kg} * (4 + 6) = 100 \text{ kg}$ .

To ensure that the **minimum pay-mass** is maintained, there is a maximum combination of **optional equipment** that can be ordered for each vehicle model. In the above example with a **minimum pay-mass** of 100 kg, the total mass of **optional equipment** for a vehicle with four **permitted seats** and a **mass in running order** of 2,850 kg should not exceed 325 kg:

3,500 kg **technically permissible maximum laden mass**  
 - 2,850 kg **mass in running order**  
 - 3\*75 kg **mass of the passengers**  
 - 100 kg **minimum pay-mass**  
 = 325 kg **maximum permissible mass of optional equipment**

It is important to note that this calculation is based on the default value for **mass in running order** as defined in the **type-approval procedure**, without taking into account the permissible weight deviations for **mass in running order** (see no. 2 above). If the maximum permissible value for the **optional equipment** of (in the example) 325 kg is almost or completely exhausted, an upward weight deviation can therefore result in the **minimum pay-mass** of 100 kg being met mathematically using the default value for the **mass in running order**, although in fact there is no corresponding **load capacity**. Here, too, an example calculation for a vehicle with four seats, whose real weighed **mass in running order** is 2 % above the nominal value:

3.500 kg **technically permissible maximum laden mass**  
 - 2.907 kg **real weighed mass in running order** (+ 2 % compared to the stated value of 2,850 kg)  
 - 3\*75 kg **mass of the passengers**  
 - 325 kg **optional equipment** (maximum permissible value)  
 = 43 kg **actual load capacity** (< **minimum pay-mass** of 100 kg)

In order to avoid such a situation, Dethleffs further reduces the maximum permissible weight of the total **optional equipment** that can be ordered on a model-specific basis. The limitation of **optional equipment** is intended to ensure that the **minimum pay-mass**, i.e. the legally prescribed free mass for **baggage** and retrofitted **accessories**, is actually available for the **vehicle load capacity** of the vehicles delivered by Dethleffs. Since the weight of a specific vehicle can only be determined when it is weighed at the **end of the line**, in very rare cases a situation may arise in which the **minimum pay-mass** at the **end of the line** is not guaranteed, despite this limitation of **optional equipment**. In order to guarantee the **minimum pay-mass** even in these cases, Dethleffs will check together with your **trade partner** and you before delivery of the vehicle whether, for example, the vehicle is loaded up, seats are reduced or **optional equipment** is removed.

## 6. Effects of tolerances of the mass in running order on the pay-mass

Regardless of the **minimum pay-mass**, you should note that unavoidable production-related fluctuations in the **mass in running order** – both upwards and downwards – have a mirror-image effect on the remaining **load capacity**: If you order our example vehicle (see no. 3. above), for example, with **optional equipment** with a total weight of 150 kg, the calculated **pay-mass** based on the default value for the **mass in running order** is 275 kg. The **load capacity** actually available may deviate from this value due to **tolerances** and may be higher or lower. If the **mass in running or-**

**der** of your vehicle is, for example, permissibly 2 % higher than stated in the sales documents, the **load capacity** is reduced from 275 kg to 218 kg:

3.500 kg **technically permissible maximum laden mass**  
 2.907 kg **real weighed mass in running order** (+ 2 % compared to the stated value of 2,850 kg)  
 3\*75 kg **mass of the passengers**  
 150 kg **optional equipment** ordered for the specific vehicle  
 = 218 kg **sactical load capacity**

As a precaution to ensure that the calculated **pay-mass** is actually given, you should therefore take the possible and permissible **tolerances** for the **mass in running order** into account when configuring your vehicle. We also recommend that you weigh the laden **motorhome** on a non-automatic scale before each journey and, taking the individual weight of the **passengers** into account, determine whether the **technically permissible maximum laden mass** and the **technically permissible maximum mass on the axle** are observed.