

Coachbuilt

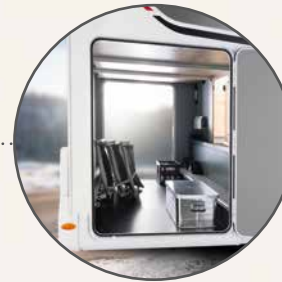
XL FAMILY



Highlights of the XL FAMILY

- + With six sleeping berths and seats as standard
- + Winterproof thanks to 40 cm high double floor with frost-proof water installation
- + Hot-water heating for comfortable living just like at home – even in winter
- + Double-glazed flush-fitting windows
- + Side walls, rear and roof made of robust, hail-resistant GRP insulated with water-repellent XPS
- + 209 cm interior headroom
- + **Exclusive chassis specification:**
 - 136 kW/180 hp Multijet engine
 - 8-speed torque converter automatic transmission
 - Cab climate control
 - Cruise control
 - Leather steering wheel
- ... and many more equipment components

Huge rear garage with a height of 145 cm and garage doors on the left and right.



With 6 m awning **as standard**



Premium low platform broad gauge chassis with twin axle and lowered by 145 mm for a safe driving experience



LIVING

Simply spacious.



For extra comfort, the passage to the cab can be closed off with matching upholstered elements. This creates a spacious U-shaped seating lounge and turns the motorhome into a cosy living room – ideal for large family gatherings.



As standard, the seating lounge is equipped with two 3-point safety belts facing in the direction of travel and two lap belts facing against the direction of travel.



Thanks to multiple direct and indirect light sources, you can create the perfect ambience to suit your mood at any given moment.



1 A television (optional) can be installed ergonomically at eye level. The required power and antenna connections are already present in the vehicle.

2 The spacious, airy interior offers 209 cm of headroom.

3 At 960 x 650 mm, the single-leg table is extremely spacious. It is height-adjustable and can be moved lengthways and crossways.

SLEEPING

Bedtime!



There are two berths in the spacious area above the cab. The 210 x 165 cm sleeping area offers more than enough space and the side window and large skylight ensure a good supply of fresh air.

Two berths are created by converting the seating lounge: lower the table, fold out the side extension elements, slide the cushions into place - and a comfortable bed with a sleeping area of 195 x 130 cm awaits you.

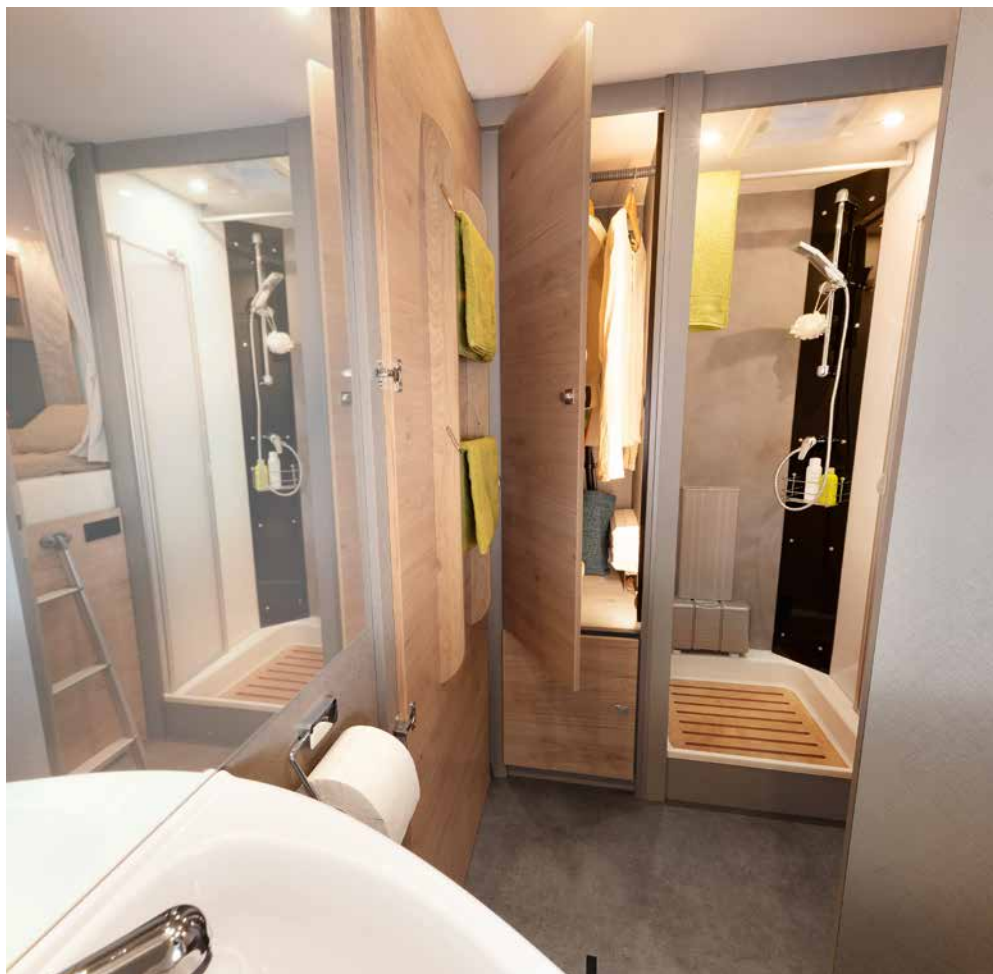


A bedroom to dream of - with a 211 x 152 cm sleeping area, two windows for good ventilation and large overhead lockers for linen. Storage nets installed under the overhead lockers allow quick access to items needed during the night. A 230 V socket and two USB charging ports make it easy to keep mobile phones and other devices charged.

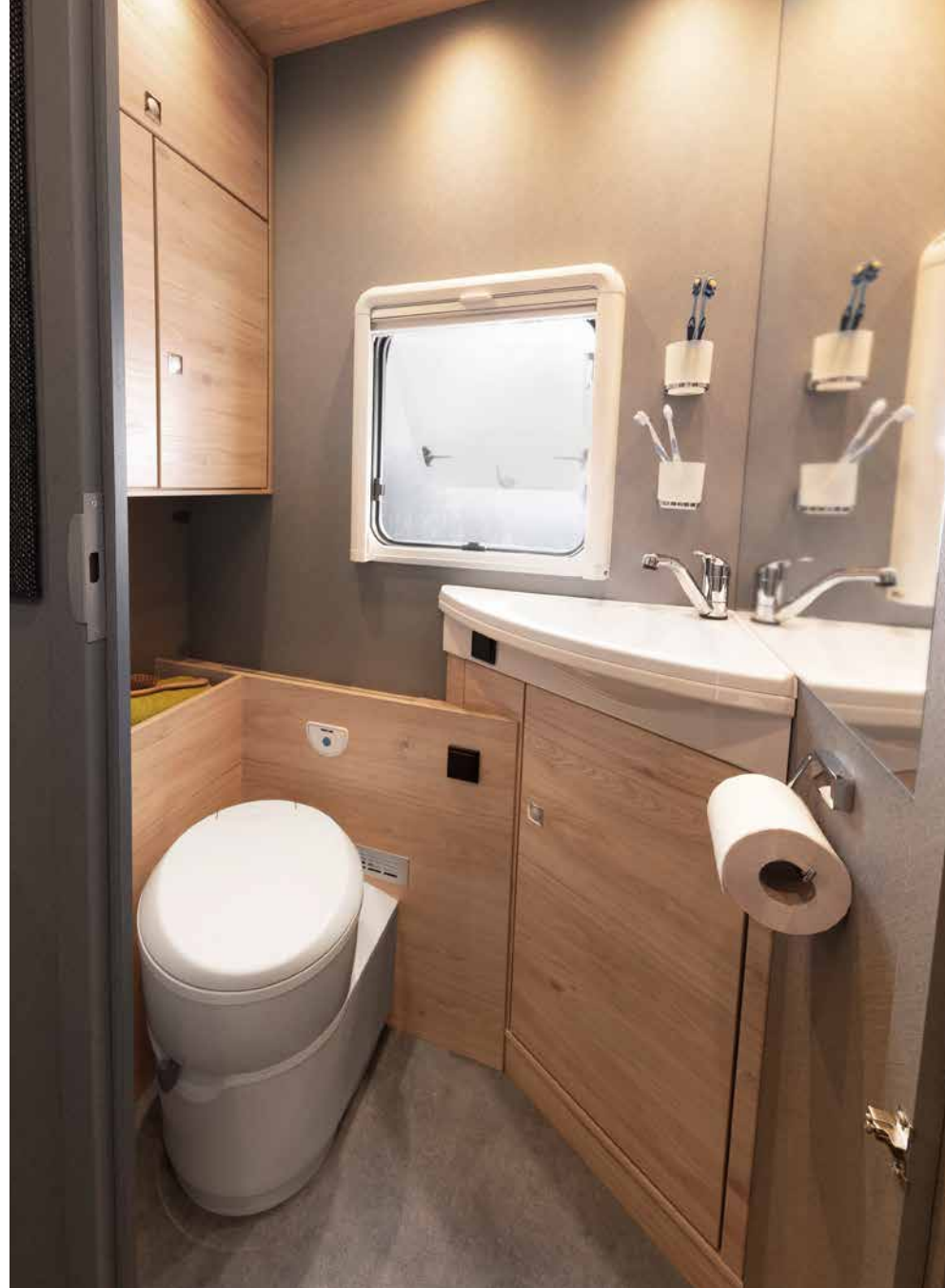


BATHROOM

Freshen up.



A centre bathroom that lives up to its name! The bathroom door can be used to close off the passage-way to the living room. This creates a large bathroom and dressing room with direct access to the wardrobe.



The bathroom is equipped with a large mirror surface that gives both taller and shorter occupants a clear view of themselves. The semi-transparent tinted window and forced-ventilation system in the roof ensure good air flow.

COOKING

Rediscover the joy of cooking.



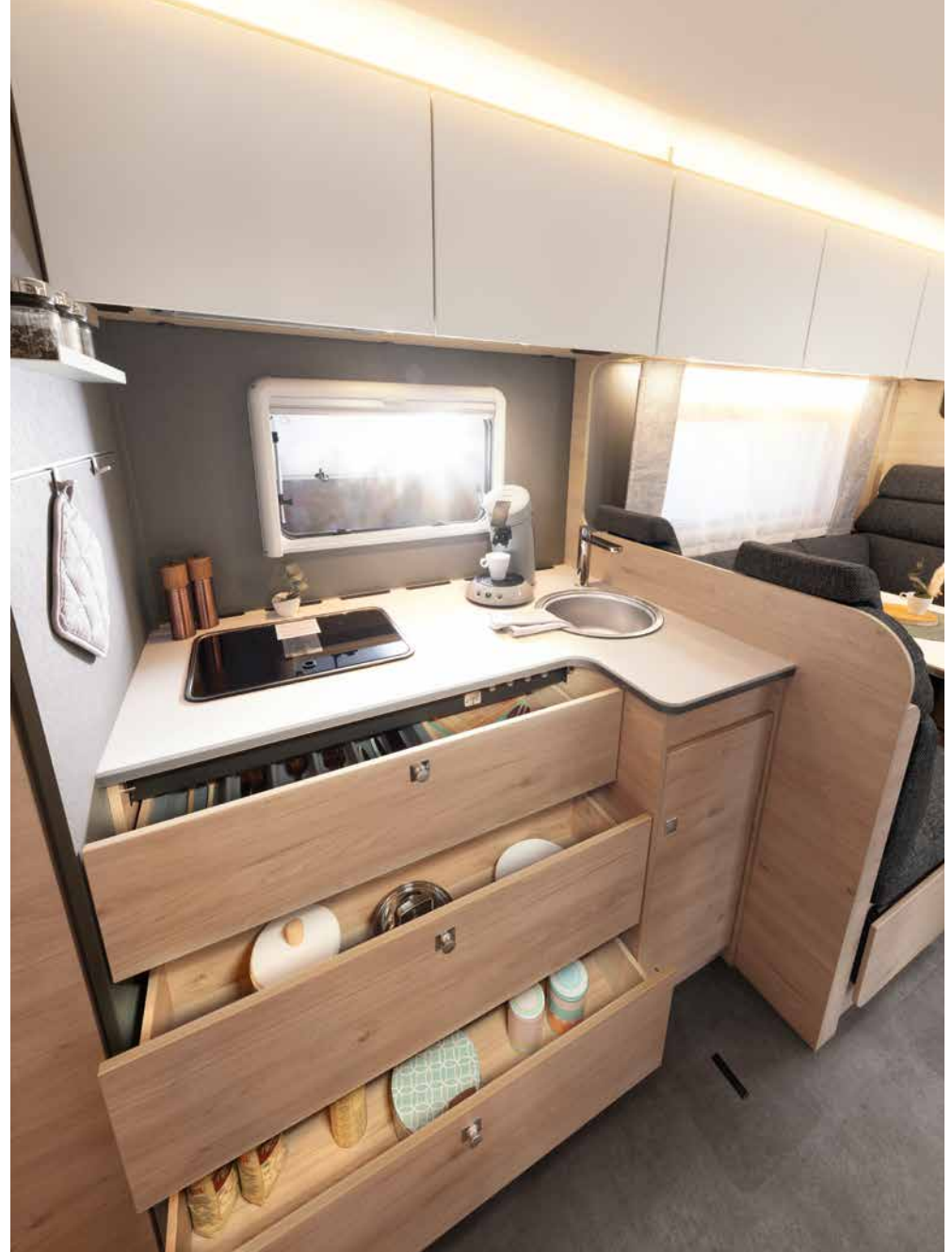
Delicious! Whether you're preparing some tasty bread rolls, casseroles or cakes, you won't want to be without the standard oven.



Besides offering plenty of storage space, the overhead lockers are also equipped with the Dethleffs AirPlus system, which provides rear ventilation to prevent condensation.



The tall refrigerator has a capacity of 137 litres including a 15-litre freezer. The convenient AES function automatically switches to the optimum power source.



Cooking is simply a pleasure – with plenty of space for chopping and preparing. Everything is organised and within easy reach. The large space in front of the kitchen even allows two chefs to cook in tandem. Other people can also easily pass behind them – just like at home.

Plus factors



You can access a comprehensive overview of the XL Family at www.dethleffs.com/xl-family



The standard awning is 6 metres long and can be extended to a width of 2.75 metres. It provides protection against the sun and rain.



Two Isofix fastening systems are fitted as standard to ensure safety when travelling with children.



The large panoramic roof window above the seating lounge brings plenty of light and air into the vehicle.



Two wardrobes are available to hang up shirts, blouses and jackets and avoid creases during transport.



The rear garage with large garage doors on the left and right offers an immense amount of space. The rear garage can also be accessed from the vehicle's interior via a small door.



The standard naviceiver combines FM/DAB+ radio and a motorhome navigation system in one device. The 9-inch touchscreen, which also displays the image from the reversing cameras, provides a clear overview.



Travelling in the XL Family is a safe and comfortable experience. This is ensured by a host of comfort features and assistance systems, such as cab climate control, cruise control, a digital speedometer, full LED headlights including LED daytime running lights, ESP (including ASR), Traction+, Hill Holder and much more.

Textile specification



Floyd



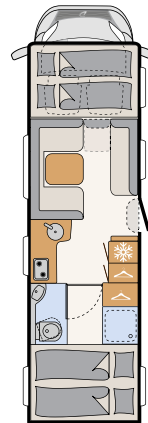
Noce Nagano



More information is available at:
www.dethleffs.com/xl-family
or in the separate technical information



XL Family



A 7872-2
6 sleeping berths